

PAYA LEBAR METHODIST GIRLS' SCHOOL (PRIMARY)
 WEIGHTED ASSESSMENT 1 2025
 PRIMARY 4 SCIENCE

Section A	/18
Section B	/12
Total	/30

Name: _____ ()

Class: Primary 4 _____

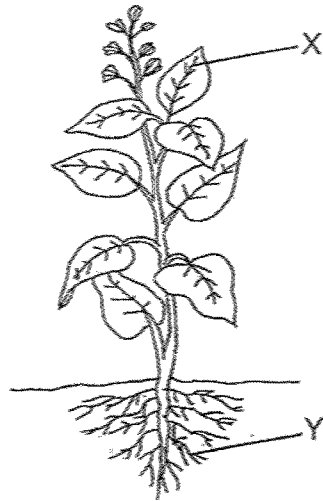
Date: _____

Parent's Signature: _____

Section A: Multiple Choice Questions (18 marks)

For each question from 1 to 9, four options are given. One of them is the correct answer. Make your choice (1, 2, 3 or 4) and write your answer in the brackets provided.

1. The diagram shows a plant.



Which of the following identifies the parts correctly?

	X	Y
(1)	flower	root
(2)	leaf	stem
(3)	leaf	root
(4)	stem	flower

()

2. Study the three human body systems.

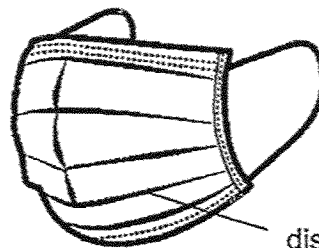
Circulatory system	Respiratory system	Digestive system
heart	lungs	stomach
blood vessels	gullet	small intestine
blood	windpipe	nose

Which human body system(s) has/have the parts correctly matched to the system?

- (1) circulatory only
- (2) circulatory and digestive only
- (3) respiratory and digestive only
- (4) circulatory, respiratory and digestive

()

3. The picture shows a disposable face mask. The mask serves to protect the wearer from breathing in viruses in the air.



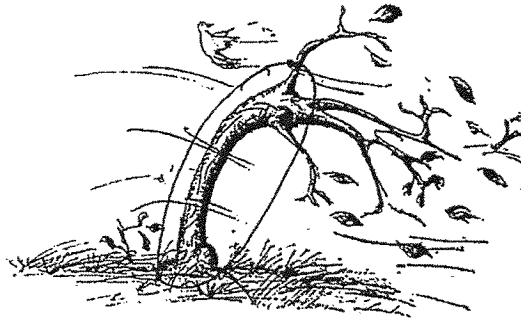
disposable face mask

Which of the following human systems does the mask protect directly?

- (1) Muscular system
- (2) Digestive system
- (3) Circulatory system
- (4) Respiratory system

()

4. The picture shows a tree caught in a strong gust of wind.



Which of the following explains why the tree remain in place?

- (1) The stem holds the tree upright.
- (2) The stem transports food and water.
- (3) The roots absorb water and mineral salts.
- (4) The roots hold the tree firmly to the ground.

()

5. Study the statements about the human digestive system.

- A No digestion of food takes place in the mouth.
- B The gullet joins the mouth to the stomach.
- C Digested food from the small intestine is passed to the large intestine.

Which statements about the digestive system is **NOT** correct?

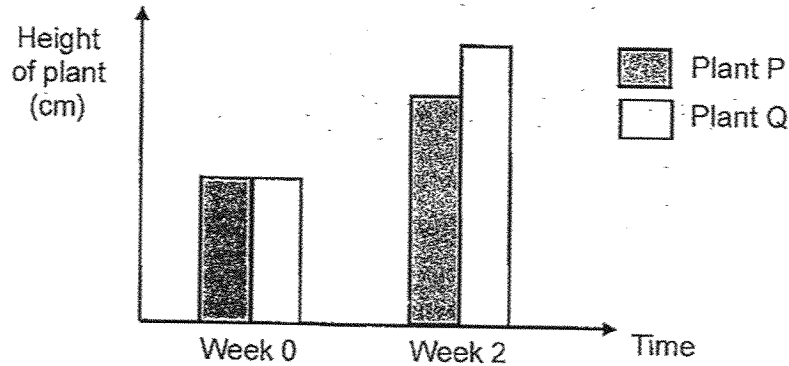
- (1) A and B only
- (2) A and C only
- (3) B and C only
- (4) A, B and C

()

Use the information below to answer Questions 6 and 7.

Alice had two similar plants P and Q. Plant P has most leaves removed. Both plants were put at the same place and watered daily.

The graph shows the heights of both plants at week 0 and week 2.



6. How does the number of leaves affect the height of the plants?

- (1) The taller the plant grows, the fewer the number of leaves.
- (2) The fewer the number of leaves, the taller the plant grows.
- (3) The greater the number of leaves, the taller the plant grows.
- (4) The number of leaves does not affect the height of the plants.

()

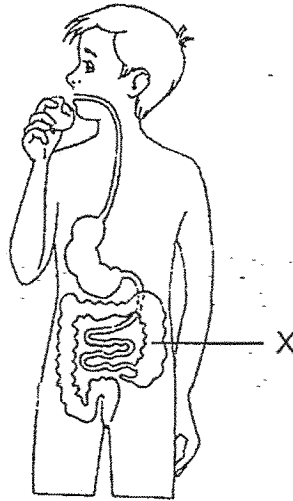
7. Alice observed that even with fewer leaves, plant P could still grow.

What does her observation show about the function of leaves?

- (1) Make food for the plant
- (2) Take in and give out gases
- (3) Absorb water and mineral salts
- (4) Transport food, water and mineral salts

()

8. The diagram shows the digestive system in Andy's body.



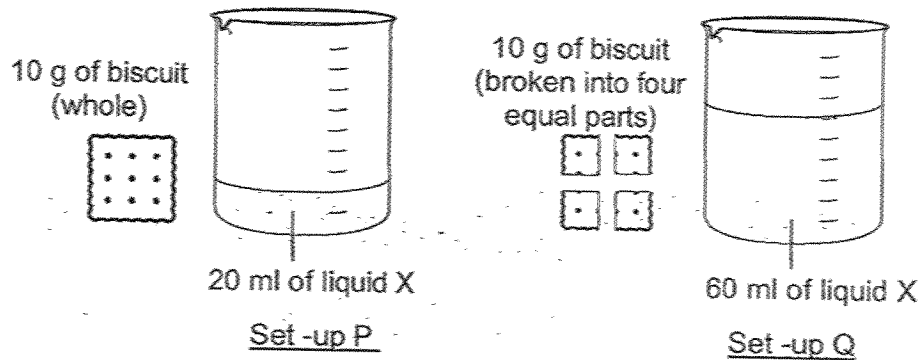
He passed out watery stools.

What happened in part X that caused his stools to be watery?

- (1) The food continued to be digested there.
- (2) Water is removed from the digested food.
- (3) The undigested food became solid waste.
- (4) Not much water was removed from the undigested food.

()

9. Daniel wanted to find out if the amount of liquid X would affect how fast food could be digested. He set up an experiment as shown below.



He used two set-ups P and Q, using different volume of liquid X. In both set-ups, the time taken for the biscuit to be completely digested is recorded.

Which of the following statements about the experiment is true?

- (1) It is a fair test because the amount of liquid X is different.
- (2) It is not a fair test because the amount of liquid X is different.
- (3) It is a fair test because the exposed surface area of the biscuits is different.
- (4) It is not a fair test because the exposed surface area of the biscuits is different.

()

END OF SECTION A

Section B: 12 marks

For questions 10 to 13, write your answers in the spaces provided.

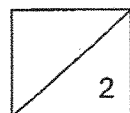
The number of marks available is shown in brackets [] at the end of each question or part question.

10. Study plants R and S.

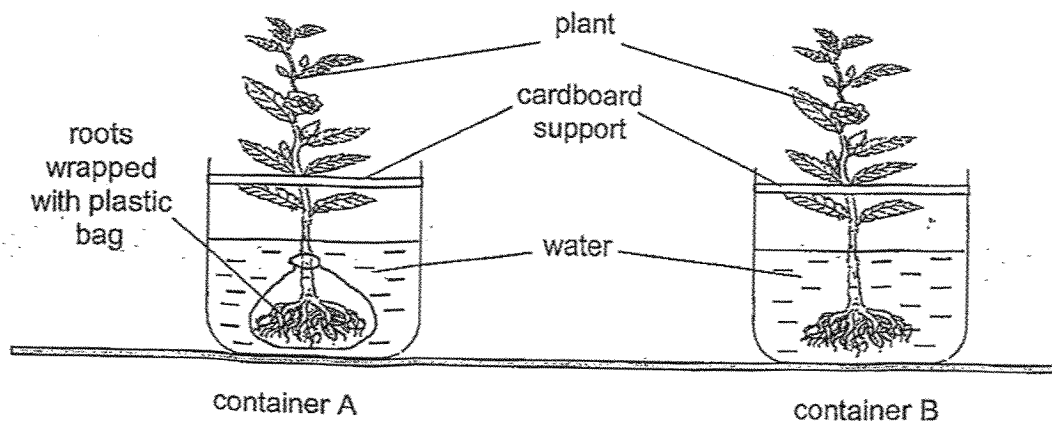


(a) Based on the diagram, state one similarity between the stem/ of plants R and S. [1]

(b) Explain how climbing up the wooden support helps plants R and S to grow well. [1]



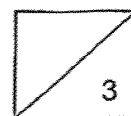
11. Jack wanted to find out if the roots of a plant are important for taking in water. He prepared two similar plants with equal volume of water in each container as shown.



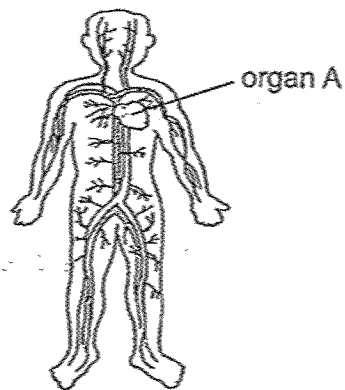
- (a) What would he observe about the water level in container B after a few hours?
Explain your answer.

[2]

- (b) State another variable that must be kept the same in this experiment.



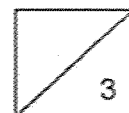
12. The diagram shows a human body system X.



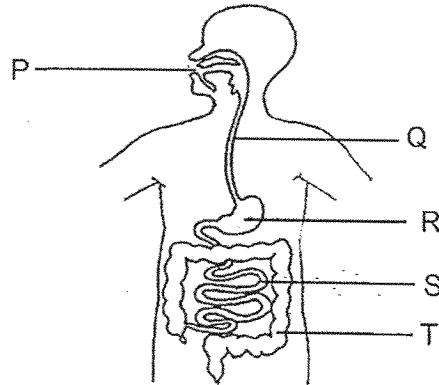
(a) Name organ A. [1]

(b) Name the human body system that protects organ A. [1]

(c) State a function of the human body system X. [1]



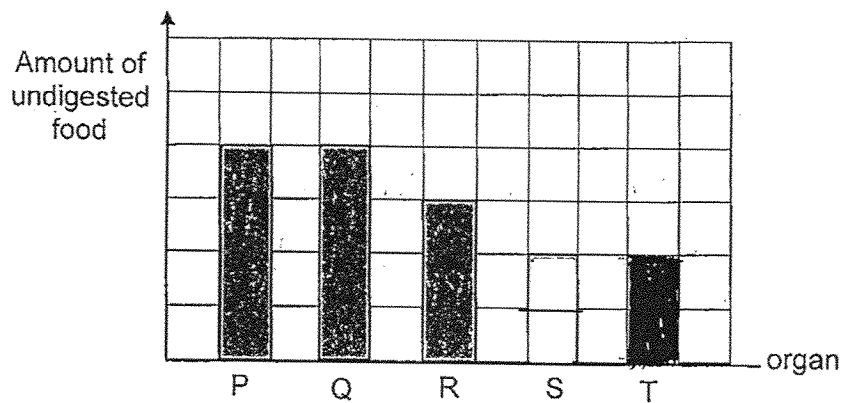
13. The diagram shows the human digestive system.



- (a) State what digestion is. [1]
-

- (b) Name the substance produced by organ P that help to digest food.
-

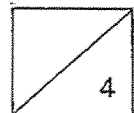
The bar graph shows the amount of undigested food leaving each organ of the human digestive system.



- (c) Draw another bar above to show the amount of undigested food leaving organ T. [1]

- (d) A large part of organ S is removed due to a disease. What would happen to the amount of food being absorbed? [1]
-

END OF SECTION B



SCHOOL : PAYA LEBAR MGS SCHOOL
LEVEL : PRIMARY 4
SUBJECT : SCIENCE
TERM : 2025 WEIGHTED ASSESSMENT 1

Q1	3
Q2	1
Q3	4
Q4	4
Q5	5
Q6	3
Q7	1
Q8	4
Q9	4
Q10	<p>a) Both plant R and plant S have weak stems.</p> <p>b) When climbing up the wooden support, plant R and plant S leaves are lifted higher to absorb more sunlight, and when the leaves collect more up the wooden support helps plant R and plant S because it lets their leaves get more sunlight to make more food.</p>
Q11	<p>a) He would observe that the water level in container B would be lower than container A. He would observe this because the roots of a plant help take in water and mineral salts but container A's plant roots are in a plastic bag whereas container B's plant roots are not in a plastic bag so container B's plant roots can absorb unlike container A's plant roots. Therefore, container B's water level will be lower than container A's water level after a few hours.</p> <p>b) The place where he experimental on the plants.</p>
Q12	<p>a) Heart</p> <p>b) Skeletal</p> <p>c) One of the functions of system X is to bring oxygen, water and the nutrients of digested food to other parts of the body.</p>
Q13	<p>through the anus.</p> <p>b) Saliva</p>

c)

Label	Value
P	4
Q	5
R	3
S	2
T	2.5

d) The amount of food being absorbed into the bloodstream would be lesser because there would not be enough time to absorb all the digested food into the bloodstream. The amount of food digested in part S would also be lesser than usual.

WA2 Task 1

a)	solid
b)	4,5,2,1,3,
c)	triangle , circle , square
d)	The shapes are of different size.
e)	Another apparatus that can be used to measure the mass of the shapes is a table top electronic balance.

Task 2

a)	200 cm ³
b)	faster than
c)	When air enters the bottle from one hole the water leaves the bottle from the other hole.
d)	Take out the lid of the it will not be so squashed with the water there for the water flows out faster when both hole are open.
e)	Water has a definite voume.

PAYA LEBAR METHODIST GIRLS' SCHOOL (PRIMARY)
 WEIGHTED ASSESSMENT 2 2025
 PRIMARY 4 SCIENCE

Name: _____ ()

Total	/10
-------	-----

Class: Primary 4 _____

Date: _____

Parent's Signature: _____

For each task, please read the instructions carefully.

Task 1

Materials:

- Beam balance
- Shapes (square, triangle, circle)

Circle the correct answer. [1]

(a) All the shapes are in (*solid* / *liquid* / *gas*) state.

(b) Number **Steps 2** and **3** to compare the mass of the shapes. [1]
 Steps 1, 4 and 5 are shown below.

Number	Steps
4	Repeat steps 1 to 3 comparing two shapes at a time.
5	Based on your observation, arrange the shapes from the least mass to the greatest mass in (c).
	Check that the beam balance is level (not tilted) when both pans are empty.
	Place the beam balance on the table.
	Put one shape at the centre of each pan and observe the beam balance.

(c) Arrange the shapes (square, triangle, circle) from the **least mass to the greatest mass**. [1]

_____ , _____ , _____
 (least mass)

(d) Based on your observation, what evidence suggests that the three shapes have different volumes? [1]

(e) Name another apparatus that can be used to measure the mass of the shapes. [1]

Task 2

Materials:

- A 250 cm³ bottle containing 50 ml of water with two holes on its lid
- Beaker

(a) State the volume of air in the bottle.

[1]

_____ cm³

Steps:

1. Leave both holes on the lid open and pour out some water into the beaker. Observe how the water flows.
2. Use your finger to cover one of the holes and pour out some water into the beaker through the other hole. Observe how the water flows.
3. Record your observations.

Circle the correct answer.

[1]

(b) When both holes are open, the water flows out

(*faster than* / *slower than* / *as fast as*) when one of the holes is covered.

(c) Explain your observation in (b).

[1]

(d) Without damaging the bottle or the lid, what is another way to make the water flow out of the bottle faster?

[1]

(e) State a property of water that can be observed when you pour out all the water from the bottle into the beaker.

[1]
